



Uniclass
L7626
May 2005

VideSearch Automatic Cell Monitoring System - VSD601

The ClearView VideSearch Video Analytics system can be utilised as part of a force's policy to minimise the likelihood of prisoners harming themselves within police cells.

The sophisticated detection system can be used to generate alarms whenever the behaviour of persons in a cell is considered unusual e.g. persons in a prone position on the floor of the cell, long periods of activity near the walls of the cell, or at height within the cell that is unusual for the particular occupant.

The system may also be set to alarm when a prisoner acts in a pre-defined way (e.g. stands behind the cell door, stands on the bed etc.)

Alarms may be generated by **colour** as well as activity.

Due to the advanced features of the detection system, it is possible to precisely configure the alarm detection to a specific cell layout, so that routine behaviour does not generate false alarms.

Alarms are presented to custody staff via a simple audio and visual prompt, with display of the camera view of the cell that is giving cause for concern. The system can also send an alarm event signal to an existing tape or digital video recording system.

Automated cell monitoring also provides all the retrospective searching capabilities of a standard ClearView VideSearch system e.g. Search for particular events like "person in white shirt entering cell", "three people present in cell" etc.

Features and Benefits

Intelligent alarm of self-harm scenarios

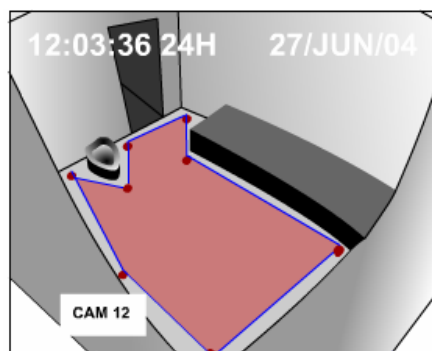
Cell cameras with no ligature points and maximum vandal resistance

Colour/monochrome cameras providing pictures in complete darkness

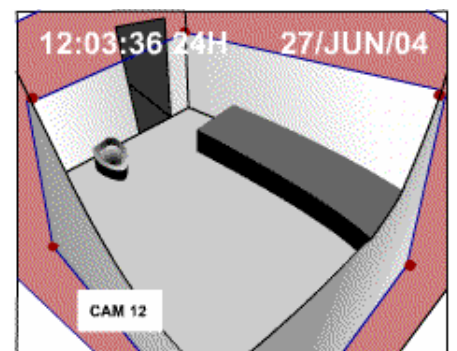
Inbuilt "black" infra red illumination option

Integration with existing custody desk and area recording systems

Option for audio monitoring and/or two way audio intercom facilities



Detects inactivity in prone position



Detects activity in regions above 6 ft

VSD601...



Closed circuit (CCTV) technology is increasingly being utilised as a tool for recording and monitoring police and prison cells to provide an enhanced level of care — whilst allowing transparency of police treatment of prisoners.

ClearView Communications have installed their cell recording systems for police forces requiring coverage of vulnerable cells and for recording all cells within a single custody suite.

Cell Cameras

High resolution colour/monochrome cameras (480 TV Lines) are provided in specially designed "cell" housings. Cameras are capable of producing video pictures in complete darkness since "black" infrared illuminators are built into the camera housing. The cameras provide a complete 90 degree view of the cell which includes the area directly under the camera itself. The cameras are designed with no ligature points and provide the highest level of vandal resistance.

Optional Audio

Optional high sensitivity microphones may be built into the camera housings. These do not require batteries or separate mains supplies. They will pick up all sounds within the cell. A facility is also available to allow the custody sergeant to communicate with each cell via a telephone handset at the charge desk. A two-way conference can therefore be held between the desk and cell.

Recording

Cameras covering the cells may be integrated with existing custody recording systems or monitored and recorded on a separate digital system. Any recorded video images will carry the accurate time and date as referenced to the atomic clock received from the GPS transmitter.